

Seven Microphone Tips Reference Guide

1. Wired microphones use a cable that connects between the microphone and a sound system. Wired microphones are the most common type, and are both low in cost and highly reliable.

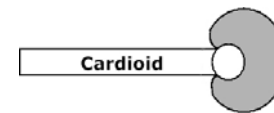
2. A wireless microphone is a system that consists of a microphone/transmitter and a receiver. The microphone signal transmits via radio frequency to a receiver, which is connected to a sound system. Clip on style microphones used with wireless systems should be placed on a lapel or a tie. All wireless microphones require a battery, typically a 9 volt plug in type. Wireless microphones usually have two switches, one to turn on the transmitter, and one to turn the microphone on. To avoid annoying pops, leave the transmitter on for your entire presentation. Use the microphone on/off switch if you wish to respond privately to a question. If there is any doubt as to when the last time the battery was changed, change it before your presentation, as this is cheap insurance.

3. There are two major types of microphone pick up patterns.

Omnidirectional or Omni microphones pick up sound from all directions evenly, with a circular polar pattern. While great for music recording, omni mics are not good for speech or presentation use because they pick up the audience and the sound system loudspeakers, as well as the primary person talking.



The Unidirectional or Cardioid microphone has a heart shaped pick up pattern, and picks up sound from the front while rejecting sound from the back and sides. Cardioid microphones are preferred for speech and presentation use because their use keeps audience pick up and feedback to a minimum.



4. To prevent or stop feedback from occurring, never stand directly in front of or underneath a loudspeaker. Arrive 20 minutes before your presentation to allow time for a quick check of microphone stand height and microphone volume level.

5. To adjust microphone stand height, hold the upper part of the stand that holds the microphone with one hand while turning the adjusting barrel counter clockwise. Raise or lower microphone to desired height and turn the adjusting barrel clockwise firmly to tighten. Gooseneck style stands may be adjusted by simply bending the gooseneck towards you or away from you.

6. To reduce “p-pops” caused by the letters b and p, try speaking across the microphone rather than directly into it. A good microphone working distance for most speakers is four to six inches. If you speak softly move in closer to the microphone, if you speak loudly move away from the microphone.

7. When walking while holding a wired microphone, always know where the microphone cable is at all times to avoid tripping over it.